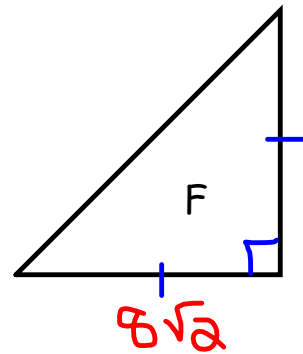
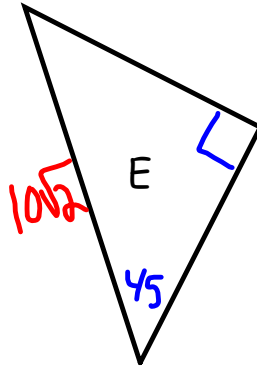
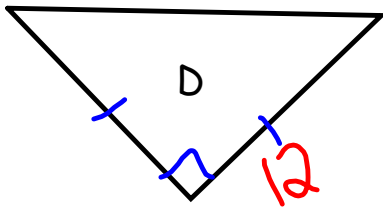
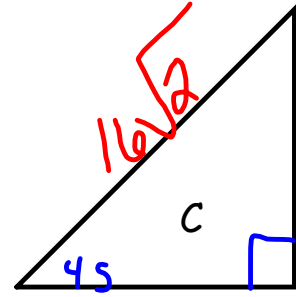
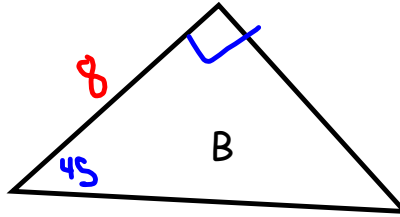
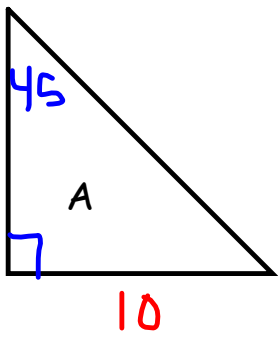
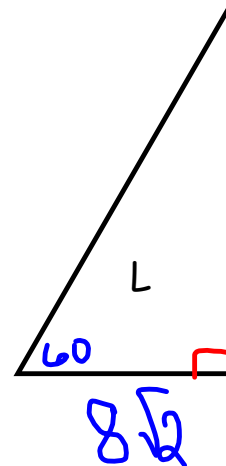
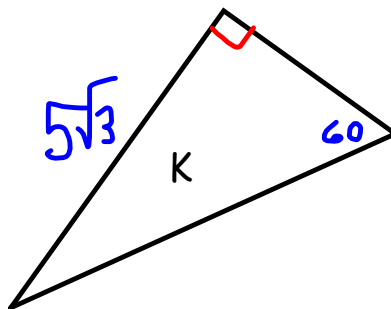
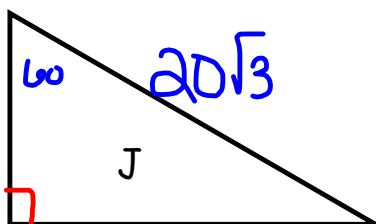
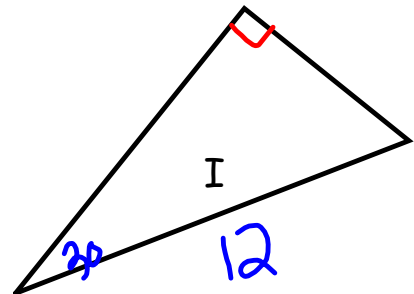
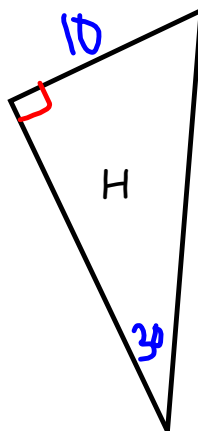
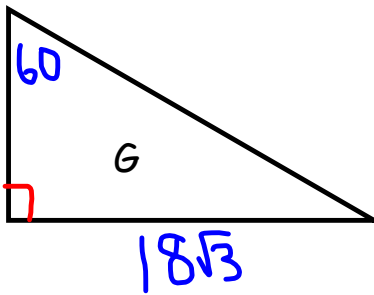


Find all missing sides



Find all missing sides



M. Find the hypo of a 45-45-90 triangle if a leg is 12.

N. Find the leg of a 45-45-90 triangle if the hypo is $9\sqrt{2}$.

O. Find the little leg of a 30-60-90 triangle if the big leg is $7\sqrt{3}$

P. Find the big leg of a 30-60-90 if the hypo is 12